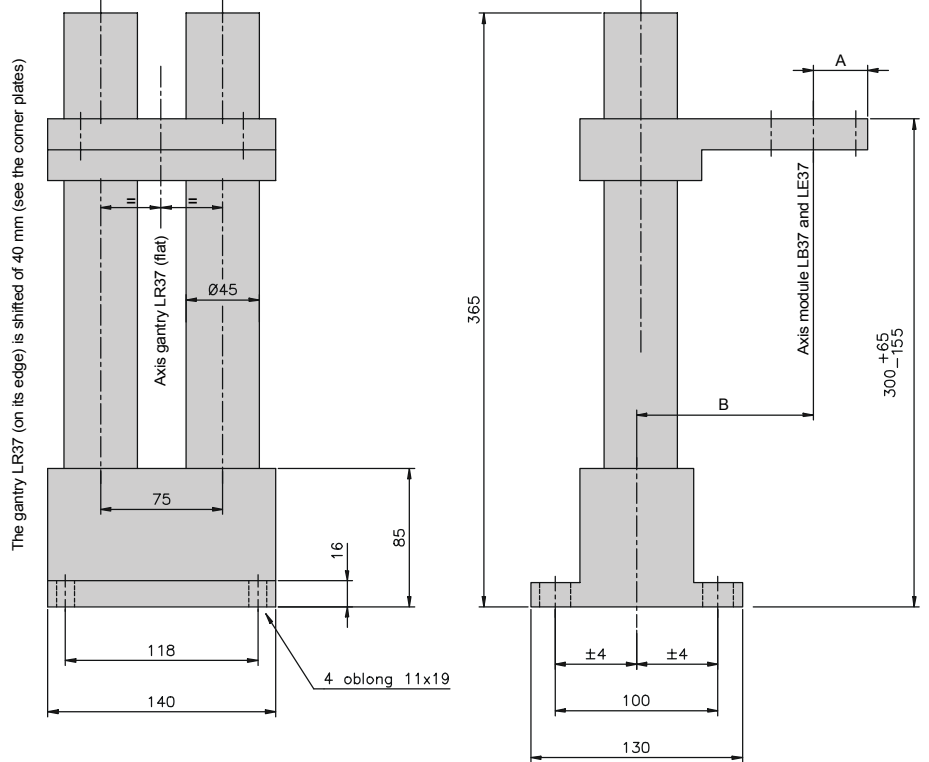
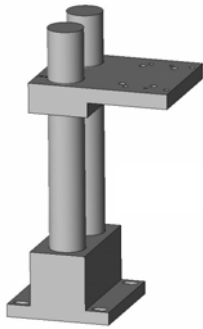


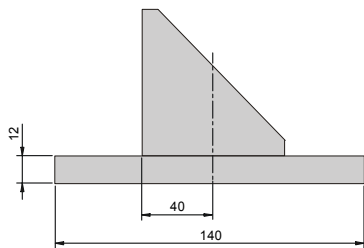
STAND

- The plate is mobile on columns by pinching
 - Fine adjusting and security anti-falls by threaded rod between columns
 - The screws to fix modules is supplied
 - Adjusting:
 - vertical axis: ± 110 mm (plate moving)
 - lateral axis: ± 4 mm (by 4 oblong holes)
- Weight : 6,4 kg

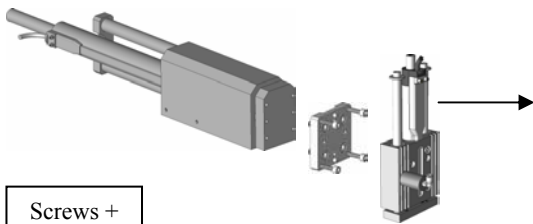
For module :	Order Nb (for 1 stand)	A	B
LB37	8319100/1	33,5	108,5
LR37 (flat)	8319100/5	-	-
LR37 (on its edge)*	8319100/6	-	-
LE37	8319100/0	47	95



* For a LR37 on its edge, add the batch of 2 corner plates:
Order Nb: 8319115



ASSEMBLY INTERFACES



Screws +
Centring
supplied

on	<=	LB23	LE23	LE37
LB37	Order Nb	8319104	8319114	8319117
	Thickness	0	9	11
	Weight (g)	0	120	260
LE37	Order Nb	-	8319106	8319116
	Thickness	-	0	11
	Weight (g)	-	0	250

sur	<=	LB23	LB37	LE23	LE37
LR37	Order Nb	8319111	8319110	8319113	8319112
	Thickness	12	12	12	12
	Weight (g)	510	510	510	510
LE37D	Order Nb	8319121	-	8319122	-
	Thickness	12	-	12	-
	Weight (g)	510	-	510	-
LG23	Order Nb	8319118	-	8319119	-
	Thickness	8	-	9	-
	Weight (g)	100	-	70	-
LR48	Order Nb	-	8319123	-	8319124
	Thickness	-	14	-	14
	Weight (g)	-	700	-	700

