

## Installing a Linmot motor on a LH guide unit

**1/** Insert the stator + slider (**with the circlips**) through the rear of the flange **up to the desired position**.

(depending on the initialization position or the SS)  
Initialization will take place with the stator circlips

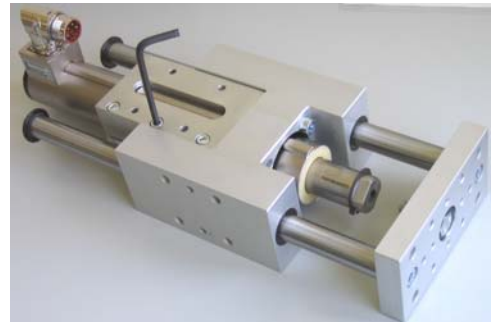


**2/ Progressively** tighten the 3 screws of the flange

Torque :    LH 48 : 3 Nm  
              LH 37 : 2 Nm  
              LH 23 : 2 Nm \*

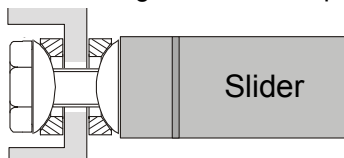
(return to the previous screw each time to obtain a homogeneous tightening)

\* clamping by 2 polyurethane sleeves for LH23



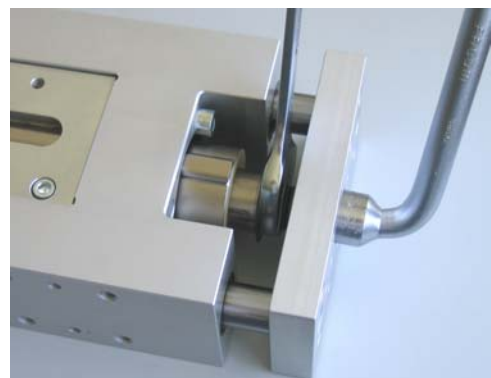
**3/** - Put **lock wire** in the threading of slider  
- Remove the seal which holds the pre-installed cup washers on the screw

For information, mounting direction of cup washers :



**4/** Tighten and torque the screw at the slider's tip with the guide **in the back position**, making sure the screw and the slider are aligned (**do not decenter while torquing**).

Torque    LH 48 : 30 Nm  
              LH 37 : 15 Nm  
              LH 23 : 4 Nm



**5/** Check by moving back and forth several times that the module does not bind over the entire stroke and that **the slider does not rub**.